



KINGS CAMP
PRIVATE GAME RESERVE

UNSPOILT AFRICA

Situated in the Timbavati Private Nature Reserve, Kings Camp faces an open savanna plain with a waterhole, which is frequented by a wide variety of wildlife both day and night.

Kings Camp offers you a unique haven where you can live the true African Safari in refined luxury.



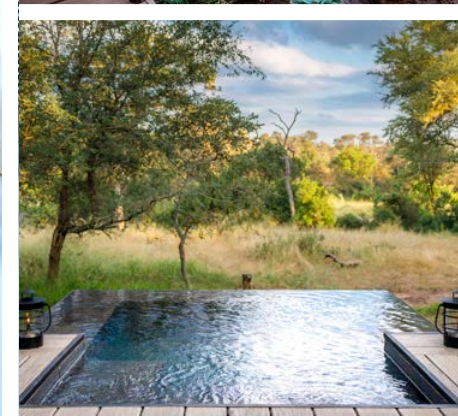


PURE INDULGENCE

LUXURY SUITES

Four generously spacious Luxury Suites are elegantly decorated in the style of a bygone era, and are equipped with air-conditioning, indoor and outdoor double shower, fully stocked mini-bar and private verandah. Dark tones of wood and thatch offset the natural colours of the bushveld.

For your comfort and convenience, other room amenities include robes, mosquito repellent, an umbrella and hairdryer. Your suite is also equipped with its own safe and telephone.



LUXURIOUS STYLE SUPERIOR SUITES

Two generously spacious Superior Suites and one Superior Family Suite, are elegantly decorated in a contemporary-style and equipped with air-conditioning, indoor and outdoor double shower, fully stocked mini-bar and private verandah with plunge pool. Dark tones of wood and thatch offset the natural colours of the bushveld. Relax and enjoy the closeness of nature with a refreshing drink around the environmentally friendly fire in your suite's outdoor sunken lounge.

For your comfort and convenience, other room amenities include robes, mosquito repellent, an umbrella and hairdryer. Your suite is also equipped with its own safe and telephone.

SUPERIOR FAMILY SUITE: Suites 2 and 3 are combined to form a Superior Family Suite with an inter-leading door to accommodate 2 adults and 2 children. This suite also has its own outside dining area for private family dinners.

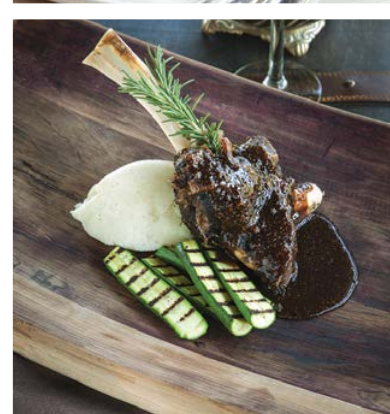
A ROMANTIC ESCAPE

Indulge in a romantic candlelit dinner whilst soaking up the bush from your private deck with fireplace...

Two spacious, air-conditioned Honeymoon Suites are exquisitely decorated and each have an open plan lounge and bathroom, with both indoor and outdoor showers. Each Suite also features its own refreshing plunge pool.

For your comfort and convenience these Suites are equipped with all luxurious modern amenities including wi-fi and a Nespresso coffee machine.





DECADENT DINING

Immerse yourself in stunning views whilst indulging in delicious cuisine in the spacious dining room, under the stars, around the pool or on the patio of your Suite.

A scrumptious breakfast or elegant dinner nestled in the bush under the canopy of an aged tree is the perfect end to your spectacular game experience, where the sights and sounds leave you feeling at one with nature.

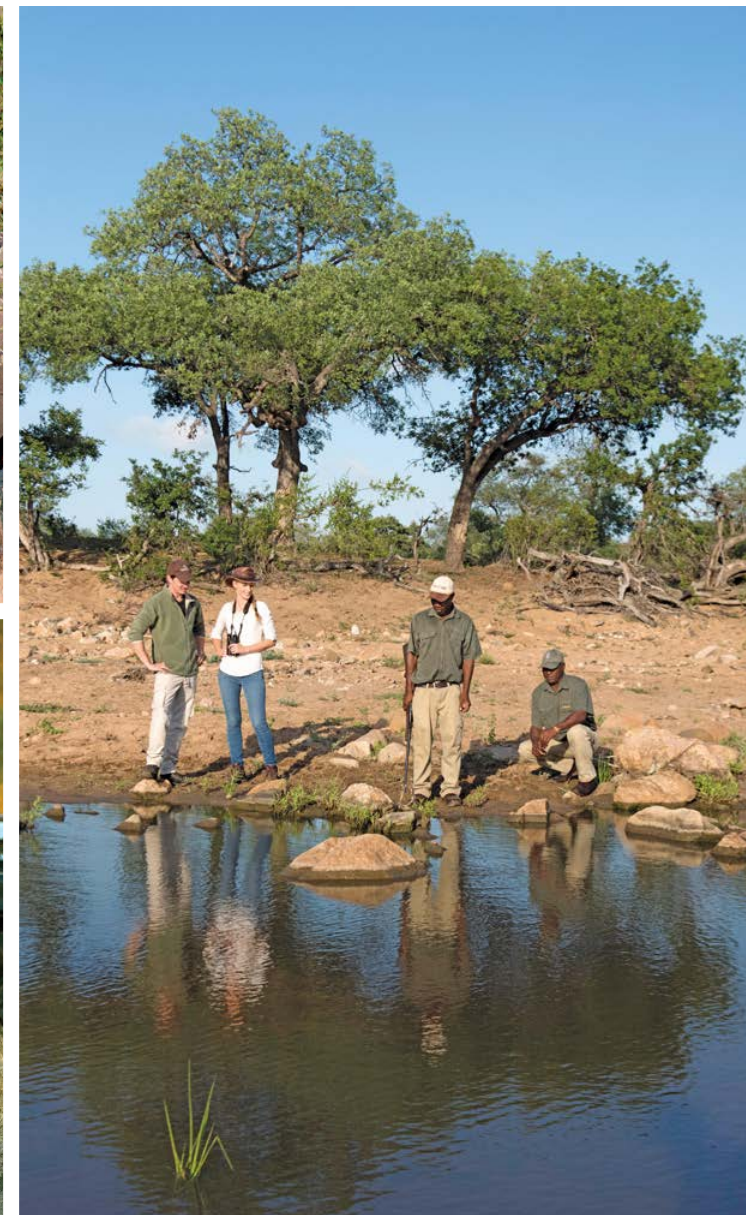
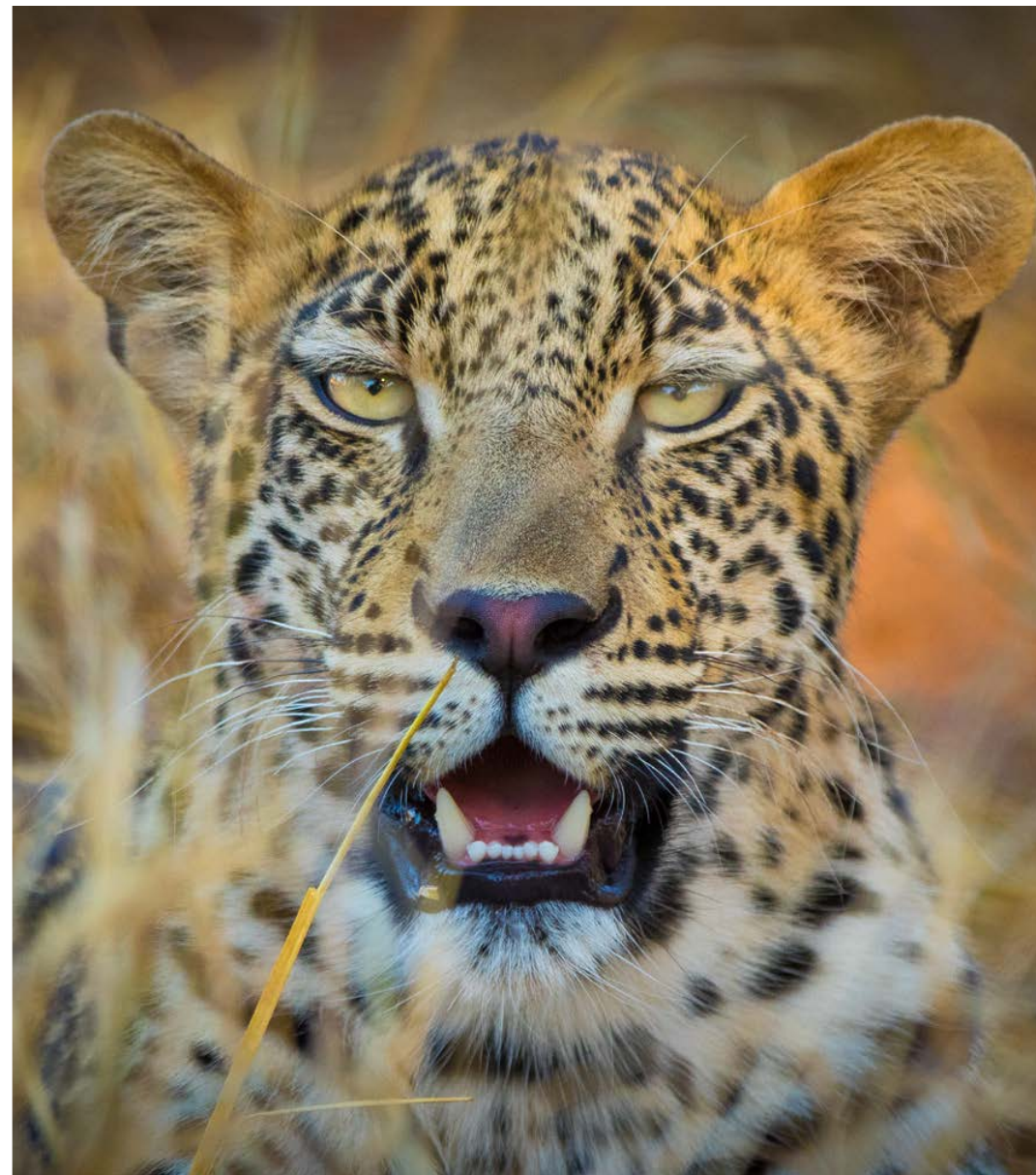
Alternatively, enjoy a hearty African feast around a crackling fire in the boma while reflecting on your day's game viewing.

ELEGANT CHARM

Kings Camp reflects the charm and romance of a bygone era... A thatched viewing lounge overlooking an active waterhole, an informal, open plan lounge and bar and coffee lounge are all ideal places where you can simply relax and soak up the tranquillity of the African bush.

Escape to the tranquil spa, or retreat to the comfort of your own suite to enjoy an array of pampering treatments. For guests not wanting to leave their fitness regime at home, they can work out in the well-equipped gym.





A TRUE AFRICAN EXPERIENCE

As part of the greater Kruger National Park, which covers an area of 2.2 million hectares, Kings Camp offers a wealth of biodiversity.

With access to 100 square kilometres of traversing, big game abounds, with each day bringing something different whilst exploring the endless fascination of Africa's wildlife in an open Land Rover.

Whether it is a leopard on the hunt, lion roaring at twilight, hippo wallowing in the river, or a crocodile basking on a sandy bank; each viewing will enthrall.

WATERBUCK PRIVATE CAMP

LUXURIOUS COMFORTS

The ultra-luxurious accommodation at Waterbuck consists of an opulent upstairs Master Suite with open plan bathroom and a comfortable viewing lounge; plus two Luxury Suites on the ground floor. A detached, spacious Luxury Garden Suite completes the accommodation for a maximum of eight guests – perfect for small groups or families.

Exquisitely decorated in dark tones of antique wood and thatch, Waterbuck is air-conditioned and comes fully equipped with all modern conveniences.





THE ULTIMATE IN SAFARI PRIVACY

Ideally situated on the banks of a dry river bed, overlooking savanna plains in the Timbavati Private Nature Reserve, Waterbuck Private Camp boasts magnificent panoramas with excellent game viewing opportunities.

Waterbuck at Kings Camp Private Game Reserve, is an exclusive Private Camp with a lavish four bedroomed Villa, allowing you the indulgence of setting the pace for your African safari.

With its own Land Rover, game-ranger and tracker, as well as a villa host and chef, all your needs will be taken care of, allowing you time to relax and unwind.

EXCLUSIVELY YOURS

Designed to take advantage of the natural surrounds, Waterbuck's outdoor living area features a sparkling pool, viewing deck with fireplace and dining area; all offering the ideal location to soak up the tranquillity of the African bush.

Sumptuous world class cuisine, prepared by your private chef, to your personal taste, can be savoured in the elegant dining room, boma or on the private viewing deck under star-studded skies.

Along with a well-equipped gym, Kings Camp offers an array of pampering treatments which can be enjoyed at the Spa or in the privacy of Waterbuck – a must in completing your all-round, rejuvenating safari experience.





www.anafricadream.co.za

ANINA KOK [Australia]

+61 41 548 8922

anina@anafricadream.com

NINA KOK [UK]

+44 74 822 2511

nina@idyllictravel.com

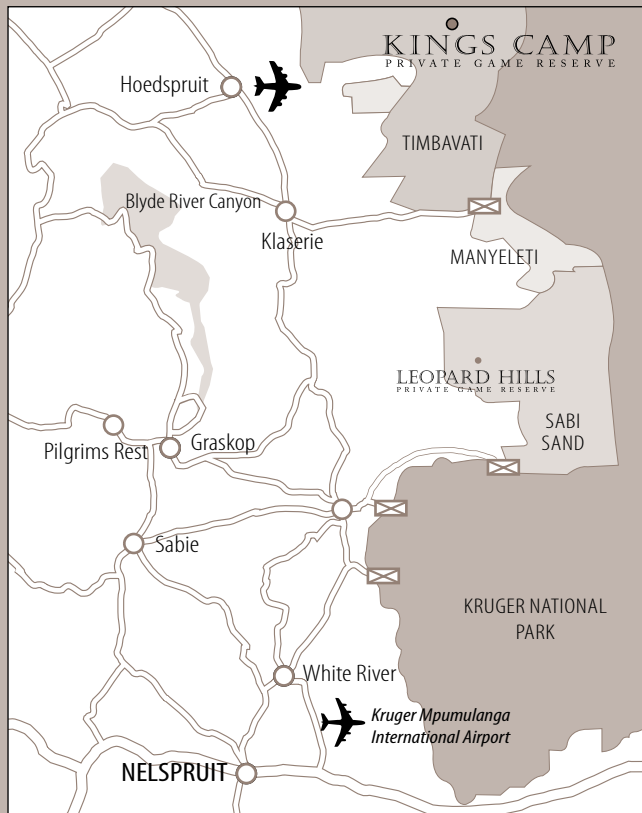
ANDRE KOK [Australia]

+61 41 335 6842

andre@idyllictravel.com



www.idyllictravel.com



KINGS CAMP PRIVATE GAME RESERVE

- 1 hr 30 min scheduled flight direct from Johannesburg to Kings Camp.
- 6 hrs drive from Johannesburg to Kings Camp.
- 'Big 5' world renowned Timbavati Private Nature Reserve.
- Spectacular game viewing.
- Custom-designed deluxe Land Rovers.
- Spacious luxury suites with verandas.
- Honeymoon Suites with private pool and verandah.
- Dining room with stunning views of the bushveld.
- Open plan lounge and bar.
- Terrace and thatched viewing deck overlooking the sparkling pool and waterhole.
- Traditional boma.
- Well stocked curio shop.
- Bush spa treatments.
- Well equipped gym.
- Complimentary Wi-Fi.

WATERBUCK PRIVATE CAMP

- An exclusive 4-bedroomed Villa for families and small groups.
- Personal ranger, tracker, chef and villa host.
- Custom-designed deluxe Land Rovers.
- Spacious luxury suites with verandas.
- Open plan kitchen, lounge and dining room.
- Sparkling pool adjacent to a viewing deck with fireplace and dining area all overlooking a dry river bed.
- Traditional boma.
- Complimentary Wi-Fi.



Kosher Safaris Available – all catering done through a licensed Mashgiach in our fully-equipped, Beth-Din Council certified, Kosher kitchen.

**KINGS CAMP
LEOPARD HILLS
MADIKWE HILLS
TUNINGI SAFARI LODGE**

IMAGES - VANESSA LEWIS & DAVID ROGERS PHOTOGRAPHY | DESIGN - BLUE HUE DESIGNS